

DESIGN BY SHENZHEN MARK TECHNOLOGY CO.,LTD.

This Design Is Protected By Intellectual Property Law.
You Shall Not Have The Right To Duplicate, Reproduce, Copy,distribute Or Disseminate It.
You Shall Take All Reasonable Precautions To Ensure Against Any Breach Of Confidentiality.
此款设计受知识产权法保护。
您无权复制，仿造或分发，传播雷同设计。
您应采取一切必要措施保证此设计的保密性。



SKU CODE / 产品型号		PACK TYPE / 包装类型						
GC-907		说明书						
VERSION	V1.0	V2.0	V3.0	V4.0	V5.0	V6.0	V7.0	REPRO
1.0	MEI	LIQ	/	/	/	/	/	
	21/04/21	23/04/03						

BRAND / 品牌	PARTS / 配件
	/
SIZE / 尺寸	MATERIAL / 材质
70(L)*90(W)mm	80g书写纸
PRINT PROCESS / 平板胶印	WARNISH / 表面处理/工艺
CMYK 90% Black	双面印刷 风琴折

GAMING SERIES

GC-907

ADVANCED GAMING CHAIR

XTRIKE ME

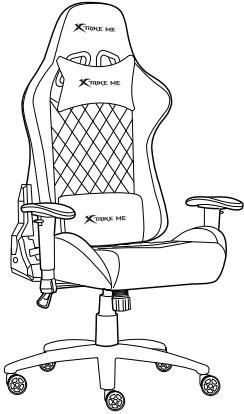
1 Product Functions

1. Product Functions

- Stable and sturdy nylon base; PU caster wheels
- Butterfly adjusting mechanism; 360 degree rotation
- Full backwards backrest swivel for a flat position
- Camber PVC armrest
- Full synthetic leather finish
- RGB backlit with breathing effect

2. Specifications

100 mm gas lift system
Backrest width: 58cm
Armrest height: 25 cm
Seat width: 57 cm
Backrest height: 82 cm
Seat depth: 48 cm
Seat adjustable height: 43 – 53 cm
Chair height: 126 – 136 cm
Maximum load: 150 kg
N.W.: 20kg



ERGONOMICS
ADJUSTABLE

ERGO
DESIGN

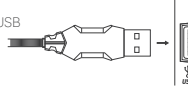
GAMING
DESIGN

2 SAFETY NOTES

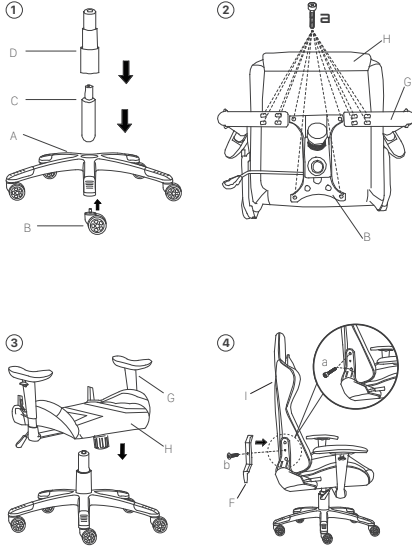
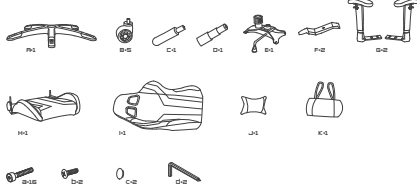
- Keep the equipment dry. Keep away from precipitation, humidity, all types of liquids and condensation.
- Do not use the product with wet hands.
- Do not use or store the equipment in dusty or dirty areas.
- Do not store the equipment under high-temperature or low-temperature conditions (this may damage it).
- Do not drop, knock or shake the equipment as it may damage it.

3 INSTALLATION

Connect the USB of the chair to an available USB port on your computer or other USB power supply interface (5V-supply-voltage).



Chair Parts



2. Usages of the controller

Testing	Continuously pressing the AUTO button 5 times until LED is off, release the AUTO button to into the mode of switching in red, green, blue, yellow, purple, cyan and white, which can test the LED.
Matching	Continuously pressing the MATCH button 5 times until LED flash in white quickly to match the Remote control with the receiving controller. Pressing the MATCH button for 5 times till LED flash in white slowly to un-match.
Reorder RGB	Differ from kinds of LED, the RGB keys may don't perfectly match to your LED, reorder them if needed. Continuously pressing the SETTING button 5 times until LED flash in white once and then turn into all white. Pressing the R button until LED is red, pressing the G button until LED is green, pressing the B button till LED is blue, then press the SETTING button once to confirm your setting.
Adjust Num of pixels	The factory default setting of the number of controlled pixels is 600. Continuously pressing the SETTING button 5 times until LED flash once and turn all white, pressing MODE+ to add pixels, press MODE- to decrease pixels (each pressing add or decrease 60 pixels) then press the SETTING button to confirm your setting. Can be regulated to up to 2048 pixels. The minimum number is 300 pixels.

5 GENERAL INFORMATION

- Unauthorized repairs or disassembly of the product will void the warranty and may cause its damage.
- This product is safe and complies to EU requirements.
- This product is manufactured conforming with the European RoHS standard. This standard was introduced to reduce the amount of electrical and electronic waste emitted into the atmosphere.
- Using the WEEE symbol (the crossed-out bin) indicates that this product is not household waste. When recycling waste properly, you protect the environment and people health. Segregated household waste collection, aids recycle materials and components used for the production of this device. For detailed information about recycling, please contact your retailer or a local authority.

6 Product Warranty

Thank you for your trust and support of Xtrike-me products,for better ensure your rights, We'll strictly comply with the related regulations and provide the after-sales service.

1.Service guarantee : To gain Xtrike-me quality warranty service with this card

2.The content of service: To offer the service as stipulated commodity replacement warranty responsibility .

3.Exclusion range of service:

Exceed the Expiry Date of service and free maintenance period.

Break down or malfunction caused by improper using/maintenance/storage not accordance with the manual instructions.

Break down or malfunction caused by other maintenance agency without our authorization.

No seal and information of the distributor shows on the Warranty Card.

Unauthorized alter of the Three Guarantees.

Failure or damage caused by force majeure such as natural disasters.

Failure or damage caused by human factor (such as operation error, collision, inappropriate input voltage, etc.)

Failure or damage caused by other non-product design, technology, manufacturing, quality and other issues

www.xtrike-me.com

7 Warranty Card

Product Model:

Product Serial No:

Date of Purchase:

Customer Name:

TEL:

Address:

Distributor Name:

TEL:

Warranty Card is the important certificate for after-sale service of Xtrike-me products, Please keep it appropriately.